

# FAG



## Products for Maintenance

**SCHAEFFLER**

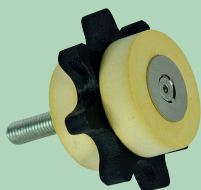
# Lubricants and lubrication devices

①



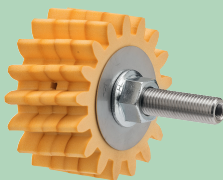
ARCANOL

②



ARCALUB-X.CHAIN-PINION

③



ARCALUB-X.PINION

④



CONCEPT2

⑤



CONCEPT8

⑥



ARCA-GREASE-GUN

⑦



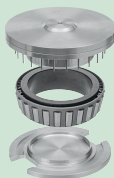
ARCA-PUMP-BARREL

⑧



ARCA-PUMP-BARREL.GUN-METER

⑨



TOOL-RAILWAY-GREASER

# Lubricants and lubrication devices

## Lubricants

Designation	Description	Further information
ARCANOL-MULTITOP	Multi-purpose grease	TPI 168
ARCANOL-MULTI2		
ARCANOL-MULTI3		
ARCANOL-LOAD150	Grease for high loads	
ARCANOL-LOAD220		
ARCANOL-LOAD400		
ARCANOL-LOAD460		
ARCANOL-LOAD1000		
ARCANOL-TEMP90	Grease for high temperatures	
ARCANOL-TEMP110		
ARCANOL-TEMP120		
ARCANOL-TEMP200		
ARCANOL-SPEED2,6	Grease for special requirements	
ARCANOL-VIB3		
ARCANOL-FOOD2		
ARCANOL-CLEAN-M		
ARCANOL-MOTION2		

## Automatic relubrication devices

Designation	Description	Further information
ARCALUB-X.CHAIN-PINION	Chain lubrication pinion	TPI 252
ARCALUB-X.PINION	Lubrication gear	
CONCEPT2	Lubricator	
CONCEPT8	Lubrication system	

## Metering pistol grease guns and grease pumps

Designation	Description	Further information
ARCA-GREASE-GUN	Lever grease gun	TPI 252
ARCA-PUMP-BARREL	Drum pump	
ARCA-PUMP-BARREL.GUN-METER	Metering pistol grease gun	
TOOL-RAILWAY-GREASER	Bearing-specific greasing tool	TPI 156

# Tools for mounting and dismounting

①



FITTING-TOOL-ALU-10-50

②



LOCKNUT-DOUBLEHOOK

③



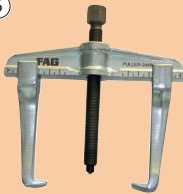
LOCKNUT-HOOK

④



LOCKNUT-SOCKET

⑤



PULLER-2ARM

⑥



PULLER-3ARM

⑦



PULLER-HYD

⑧



PULLER-TRISECTION

⑨



BEARING-MATE

⑩



HEAT-GENERATOR

⑪



HEAT-INDUCTOR

⑫



HEATER

⑬



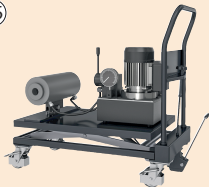
HYDNUT

⑭



PUMP

⑮



TOOL-RAILWAY-AGGREGATE

⑯



TOOL-RAILWAY-AXLE

⑰



TOOL-RAILWAY-SEALCAP-PRESS

⑱



TOOL-RAILWAY-SEALCAP

# Tools for mounting and dismantling

## Mechanical mounting and dismantling

Designation	Description	Further information
FITTING-TOOL-ALU-10-50	Mounting tool set	TPI 216
LOCKNUT-DOUBLEHOOK	Double hook wrench	
LOCKNUT-HOOK	Hook wrench	
LOCKNUT-SOCKET	Socket	
PULLER-2ARM	Two-arm extractor	
PULLER-3ARM	Three-arm extractor	
PULLER-HYD	Hydraulic extractor	
PULLER-TRISECTION	Three-section extraction plate	

## Thermal mounting and dismantling

Designation	Description	Further information
BEARING-MATE	Transport and mounting tool	TPI 217, TPI 216
HEAT-GENERATOR	Generator (medium frequency technology)	TPI 217
HEAT-INDUCTOR	Inductor (medium frequency technology)	
HEATER	Induction heating device	TPI 200

## Hydraulic mounting and dismantling

Designation	Description	Further information
HYDNUT	Hydraulic nut	TPI 196
PUMP	Hydraulic hand pump	TPI 195
TOOL-RAILWAY-AGGREGATE	Hydraulic unit	TPI 156
TOOL-RAILWAY-AXLE	Tool set	
TOOL-RAILWAY-SEALCAP-PRESS	Hydraulic press	
TOOL-RAILWAY-SEALCAP	Sealing cap tool	

# Alignment and measuring devices

①



LASER-EQUILIGN

②



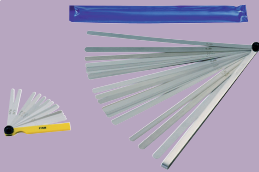
LASER-SMARTY2

③



LASER-TRUMMY2

④



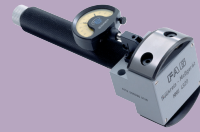
FEELER-GAUGE

⑤



MGA31

⑥



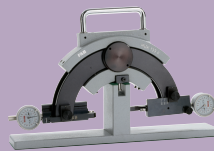
MG121

⑦



MGK132

⑧



MGK133

⑨



SNAP-GAUGE

⑩



TOOL-RAILWAY-INSPECTION-DEVICE

⑪



TOOL-RAILWAY-CLEARANCE

# Alignment and measuring devices

## Alignment and measuring devices

Designation	Description	Further information
LASER-EQUILIGN	Shaft alignment device	① TPI 182
LASER-SMARTY2	Belt pulley alignment device	②
LASER-TRUMMY2	Belt tension measuring device	③

## Gauges, mechanical

Designation	Description	Further information
FEELER-GAUGE	Feeler gauges	④ IS 1
MGA31	Enveloping circle gauge	⑤
MGI21		⑥
MGK132	Taper gauge	⑦
MGK133		⑧
SNAP-GAUGE	Snap gauge	⑨
TOOL-RAILWAY-INSPECTION-DEVICE	Visual inspection device	⑩ TPI 156
TOOL-RAILWAY-CLEARANCE	Axial clearance gauge	⑪

**Schaeffler Technologies  
AG & Co. KG**

Georg-Schäfer-Straße 30  
97421 Schweinfurt  
Germany  
Internet [www.schaeffler.de/services](http://www.schaeffler.de/services)  
E-mail [industrial-services@schaeffler.com](mailto:industrial-services@schaeffler.com)

In Germany:

Phone 0180 5003872  
Fax 0180 5003873

From other countries:

Phone +49 9721 91-0  
Fax +49 9721 91-3435

Every care has been taken to ensure the correctness of the information contained in this publication but no liability can be accepted for any errors or omissions. We reserve the right to make technical changes.

© Schaeffler Technologies AG & Co. KG

Issued: 2018, October

This publication or parts thereof may not be reproduced without our permission.

PDB 31 GB-D