



## THE COMPANY

DURBAL® has been working with rod ends for a good seven decades – and we are now already in the third generation doing so. These rod ends with integral self-aligning ball bearings were originally used in the aviation industry under the name SCHLEGEL. Nowadays DURBAL® heavy-duty rod ends and spherical-plain bearings stand for quality, reliability and precision in all industrial sectors. In recent years our focus has increa-

singly been on customer-specific system developments and special products. Our expertise is constantly being developed further for solutions involving all kinds of turning, tilting and swivelling movements. This ability is an expression of our VISION TECHNOLOGY.

## PRODUCT LINES — PREMIUM-, CLASSIC-, BASIC- Line

DURBAL® produces **the original** heavy-duty rod ends and spherical-plain bearings with antifriction- and sliding-bearing as well as hydraulic rod ends, clevises, angle joints and accessories. The heavy-duty rod ends and the spherical-plain bearings of the DURBAL **Premium** Line are especially suited to use at high speeds, with large swivelling angles or rotating movements. They can also take high loads. DURBAL® offers the **Classic** Line heavy-

duty rod ends in maintenance-free (DURBAL-Glide) and maintenance required variants. These rod ends are also suited for use with impact loads respectively in situations where swivelling movements are large. The products in the DURBAL **Basic** Line meet all standard requirements.

See more on <http://en.durbal.de>.



<http://en.durbal.de>

© Durbal Vertriebsgesellschaft mbH ↗ Verrenberger Weg 2-2 A ↗ 74613 Öhringen – D ↗ Tel.: +49 (0)7941 9460-0 ↗ Fax: +49 (0)7941 9460-90 ↗ E-Mail: info@durbal.de ↗ Web: http://en.durbal.de ↗ Design: ZIMMER® | designstudio / www.zimmer10.net

<b>DURBAL</b>	 DURBAL GENETIC CODE
VISION TECHNOLOGY	since <b>1938</b>

### ↗ DURBAL® ——— PREMIUM LINE<sup>+</sup>

Heavy-duty rod ends and heavy-duty spherical-plain bearings with antifriction bearing; customer individualised solutions

### ↗ DURBAL® ——— CLASSIC LINE<sup>×</sup>

Heavy-duty rod ends with spherical-plain bearings

### ↗ DURBAL® ——— BASIC LINE<sup>°</sup>

Standard-rod ends, spherical-plain bearings, hydraulic-rod ends, clevises, angle joints and accessories

Company brochure  
Issue N<sup>o</sup>

<http://en.durbal.de>

**(01.2011)**



PREMIUM Line



Product range →Premium

→ 01 BRTF



→ 02 BRTM / BRM



→ 03 BRTF / BRF



→ 04 BRF



→ 05 PM



→ 06 PF



→ 07 Custom-made product



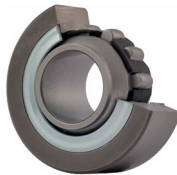
→ 08 System



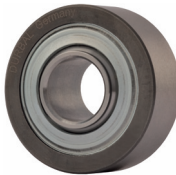
→ 09 System



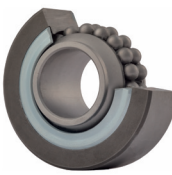
→ 10 WLT



→ 11 WLT / WLK



→ 12 WLK



PREMIUM Line

Heavy-duty rod ends

→ 01 – 06

Custom-made product

→ 07

Heavy-duty systems

→ 08 – 09

Heavy-duty spherical-plain bearings

→ 10 – 12

CLASSIC Line



Product range →Classic

→ 01 BEM



→ 02 BEM



→ 03 BEF



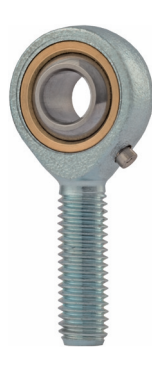
→ 04 EF



→ 05 BEMN



→ 06 BEMN



→ 07 BEFN



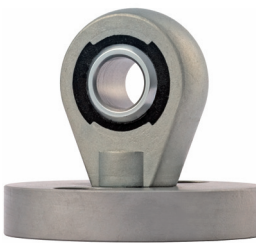
→ 08 EMN-2RS



→ 09 Custom-made product



→ 10 Custom-made product



→ 11 Custom-made product



→ 12 Custom-made product



CLASSIC Line

Heavy-duty rod ends

→ 01 – 08

Custom-made products

→ 09 – 12

BASIC Line



Product range →Basic

→ 01 DSA<sup>TK</sup>



→ 02 DSS<sup>TK</sup>



→ 03 DPHS



→ 04 DGA<sup>UK-2RS</sup>



→ 05 DGIHR<sup>K/D0</sup>



→ 06 DGF<sup>D0</sup>



→ 07 DG<sup>PW</sup>



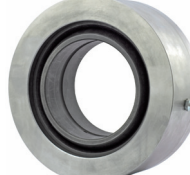
→ 08 DGE<sup>UK-2RS</sup>



→ 09 DGE<sup>E/FES(-2RS)</sup>



→ 10 Custom-made product



→ 11 Custom-made product



→ 12 DG-X-Accessories / Clevis



BASIC Line

Standard-rod ends

→ 01 – 04

Hydraulic-rod ends

→ 05 – 06

Spherical-plain bearings

→ 07 – 09

Custom-made products

→ 10 – 11

Accessories / Clevis

→ 12